

Foxesbau

P O R T F O L I O

CONSTRUCTIONS BUILT TO LAST
PROJECTS DESIGNED FOR THE FUTURE



“Reliability, Innovation, Future”

Foxesbau is a team of professionals committed to delivering superior quality, punctuality, and flexibility.

We have successfully completed numerous projects, distinguished not only by precise execution but also by meticulous attention to detail.

We believe that our experience and expertise will be a valuable asset in the realization of your construction plans.





Foxesbau – Projects in Poland and Germany

We execute construction projects in both Poland and Germany. Our international experience and deep understanding of both markets enable us to provide top-quality services tailored to local standards.

POLAND

In Poland, we offer comprehensive services including house construction, renovations, and interior finishing, ensuring durability and attention to every detail.

GERMANY

In Germany, our offer extends beyond house construction and finishing to include the installation of modern ventilated façades. Thanks to our extensive experience in the German market, we deliver solutions that combine aesthetics, energy efficiency, and durability.

Ventilated Façades

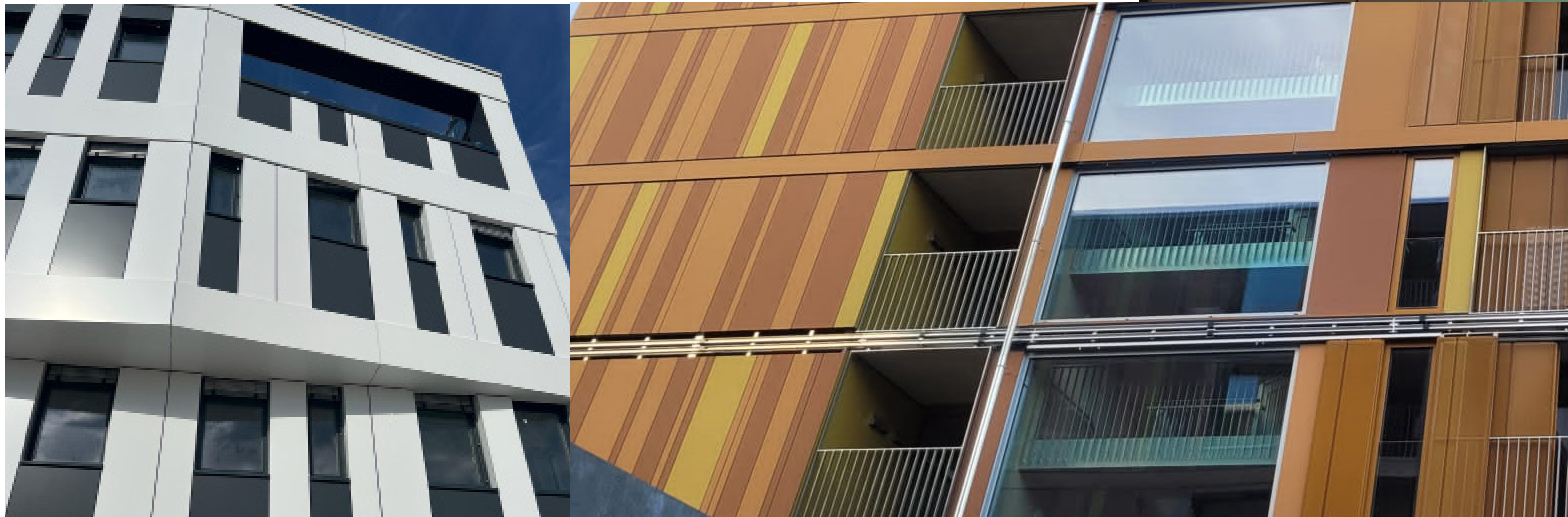


Ventilated façades are a type of cladding system where an air gap is created between the external cladding and the supporting wall structure. This gap enables controlled air circulation behind the façade.

This ventilation effectively removes moisture and heat, enhancing the building's thermal performance and reducing the risk of damage caused by dampness.

OUR SPECIALIZATION – VENTILATED FAÇADES THAT IMPRESS

These façades are often chosen to improve the energy efficiency of buildings while expanding architectural design possibilities.



We specialize in the installation of various types of ventilated façades, tailored to specific requirements and project preferences.

Façades Panel



This façade type features an external layer of cladding that is attached to the supporting wall via a structural frame. Behind this cladding layer, an air gap ensures proper ventilation.

Façades Curtain Wall



In this type of façade, the cladding elements are not directly attached to the supporting structure but are mounted using a separate frame. This creates an air cavity that allows for air circulation.

Façades Double-Skin



These façades consist of two separate layers of cladding elements with an air gap in between. This design ensures effective ventilation and provides additional protection against environmental factors.

Project Portfolio

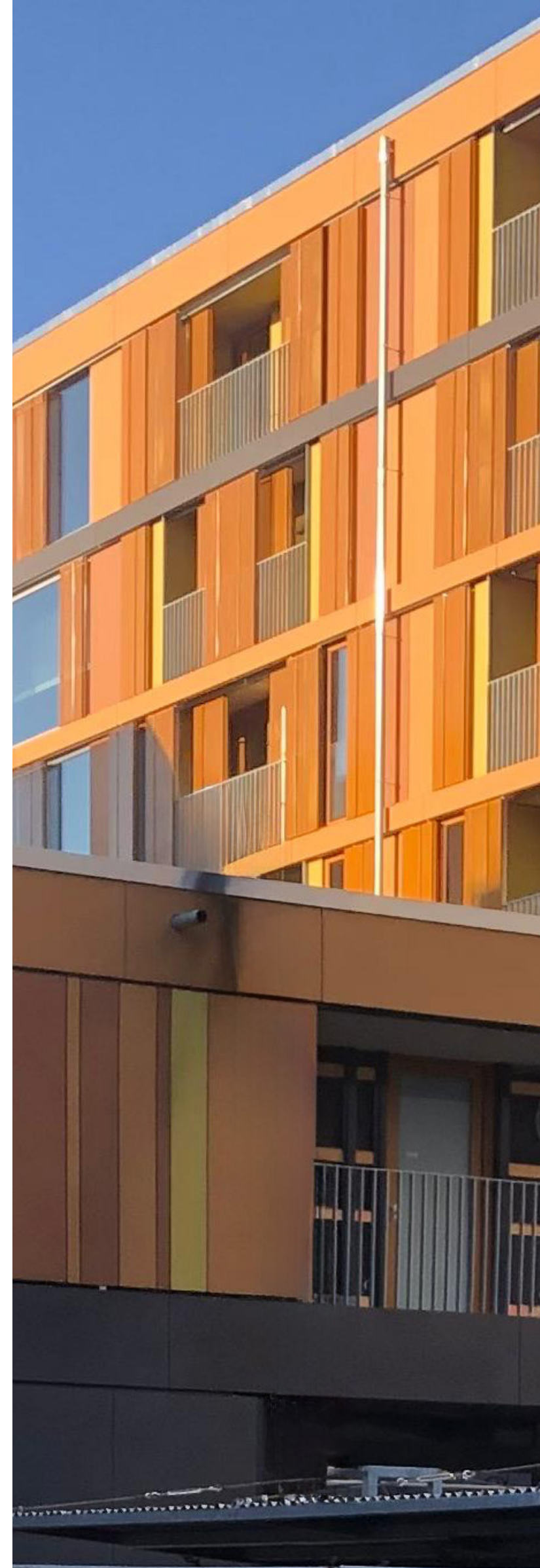
We specialize in the installation of various types of ventilated façades, tailored to specific requirements and project preferences, successfully implemented between 2022 and 2024.

Current Projects:

- School and Swimming Pool, Poing
- Kindergarten, Dresden

Completed Projects:

- ✓ Apartments, Munich
- ✓ Police Station, Königsberg in Bayern
- ✓ Medical Clinic, Traunstein
- ✓ Student Dormitories, Bamberg
- ✓ Transport Company Office Building, Straubing
- ✓ School, Ansbach





Posi-Joist Beams



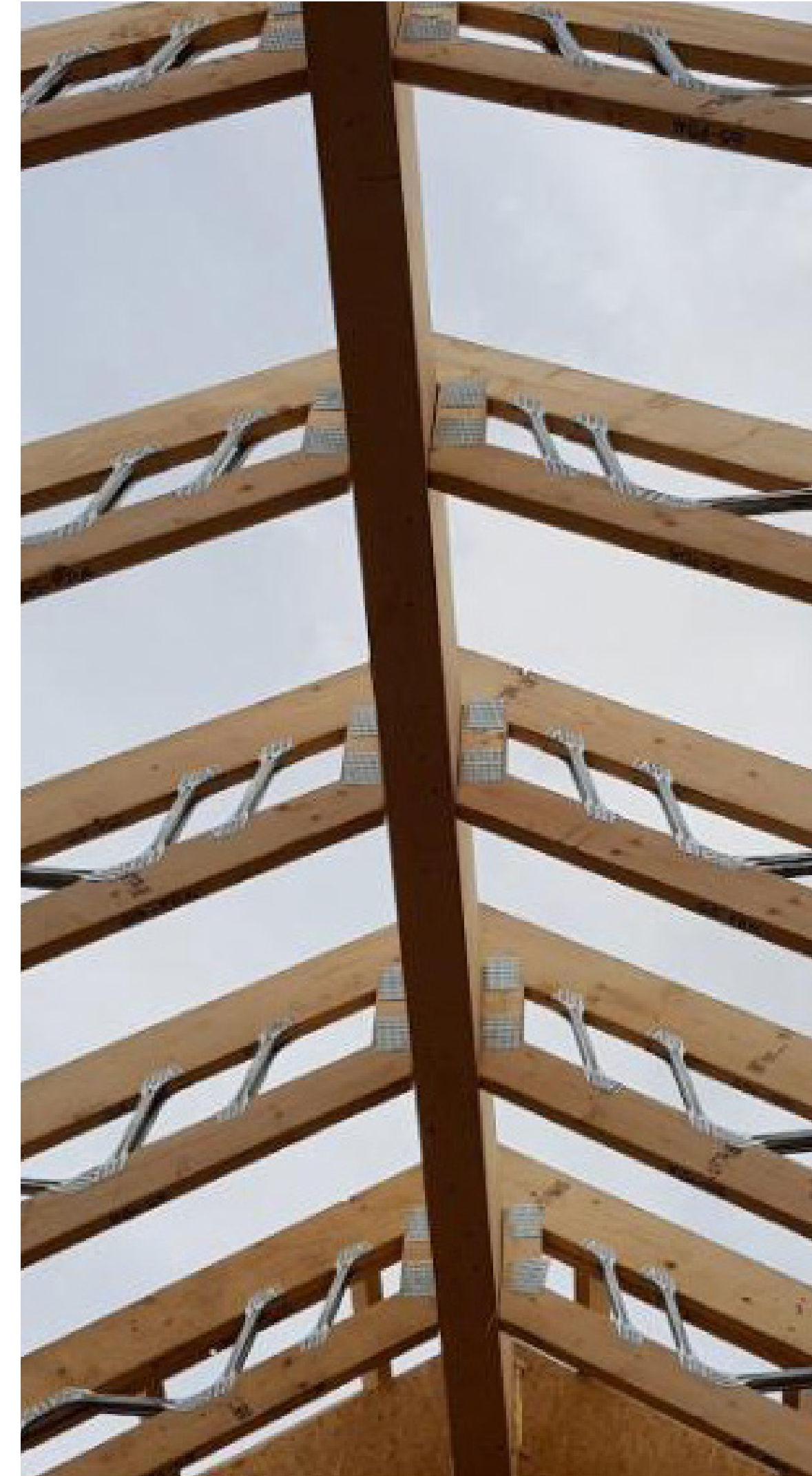
Timber-steel Posi-Joist beams combine lightness and strength with easy installation and processing. Their popularity has grown significantly in Western Europe and is now rapidly increasing in Poland.

A Posi-Joist beam consists of two wooden elements (upper and lower flanges) connected by a steel web system called Posi-Strut.

Posi-Joist

Completed Projects

We are a company specializing in the production of beams, with completed projects across Poland.



Pre-Fabricated Roof Trusses



Innovative Roofing for Unused Attics – Where Efficiency Meets Modern Design

Prefabricated roof trusses are an innovative roofing solution made of solid wood joined with metal plates. They serve as both roof and ceiling structures, eliminating the need for heavy reinforced concrete slabs.

Truss elements, also known as rafters or frameworks, are produced in prefabrication facilities and then assembled on-site. Shifting the majority of construction work to the factory significantly shortens the construction time of the roof structure while improving its overall quality.



Elimination of Concrete Slabs

Precise Calculations

Reduced Construction Costs

COMPLETED PROJECTS

Prefabricated Roof Trusses





Foundation Slabs

We specialize in the design and construction of foundation slabs, utilizing the latest technologies and solutions. We use the best, proven materials to ensure the highest quality and durability.



FOUNDATION SLAB

COMPLETED PROJECTS



ENERGY EFFICIENCY

High thermal mass and effective insulation ensure energy optimization.

DURABILITY

Waterproof and resistant to adverse environmental conditions.

CONSTRUCTION TIME

Reduced construction time thanks to optimized technological processes.

Timber Frame Houses



We specialize in constructing houses using timber frame technology, incorporating KVH-C24 structural wood, which guarantees durability and stability. Our projects combine modern technologies with the natural beauty of wood, providing comfort and energy efficiency.

By using certified KVH-C24 wood, our houses offer high load resistance and excellent insulation properties. This material creates a solid foundation for structures that are both eco-friendly and sustainable.

1.



2.



3.



Projects – Your Dream Home in the Best Hands

Our comprehensive offer covers every stage of your investment – from design to frame construction and final finishing. A team of experienced professionals ensures precision and top quality at every step.

We build with the future in mind, creating homes that meet the expectations of even the most demanding clients.

4.



5.



6.





Additional Projects

Our company collaborates with qualified specialists from various construction fields, enabling us to carry out a wide range of projects to the highest standards. Their knowledge and experience ensure quality, precision, and timely delivery for every investment.

By working with a diverse team of experts, we can handle even the most challenging projects, whether in residential or commercial construction. We complete every stage of the process with attention to detail to meet our clients' expectations.



SCOPE OF OUR WORK

- **Masonry:**
Our masons build solid and durable building structures, ensuring precision and compliance with project specifications.
- **Drywall Construction:**
Drywall specialists create modern interiors, installing partition walls, suspended ceilings, and other elements using gypsum boards.
- **Tiling:**
Our tilers deliver aesthetically pleasing and long-lasting finishes in both residential and commercial spaces.
- **Painting:**
Painters ensure a perfect final look for interiors and exteriors, using high-quality paints and modern application techniques.

- **Carpentry:**

Carpenters and furniture makers craft custom-built furniture and fittings tailored to individual client needs.

- **Furniture Installation:**

Our installers professionally fit kitchen, bathroom, and other interior furnishings.

- **Wood Flooring:**

Our flooring specialists lay wooden floors, ensuring durability and a beautiful finish.

- **Electrical Installations:**

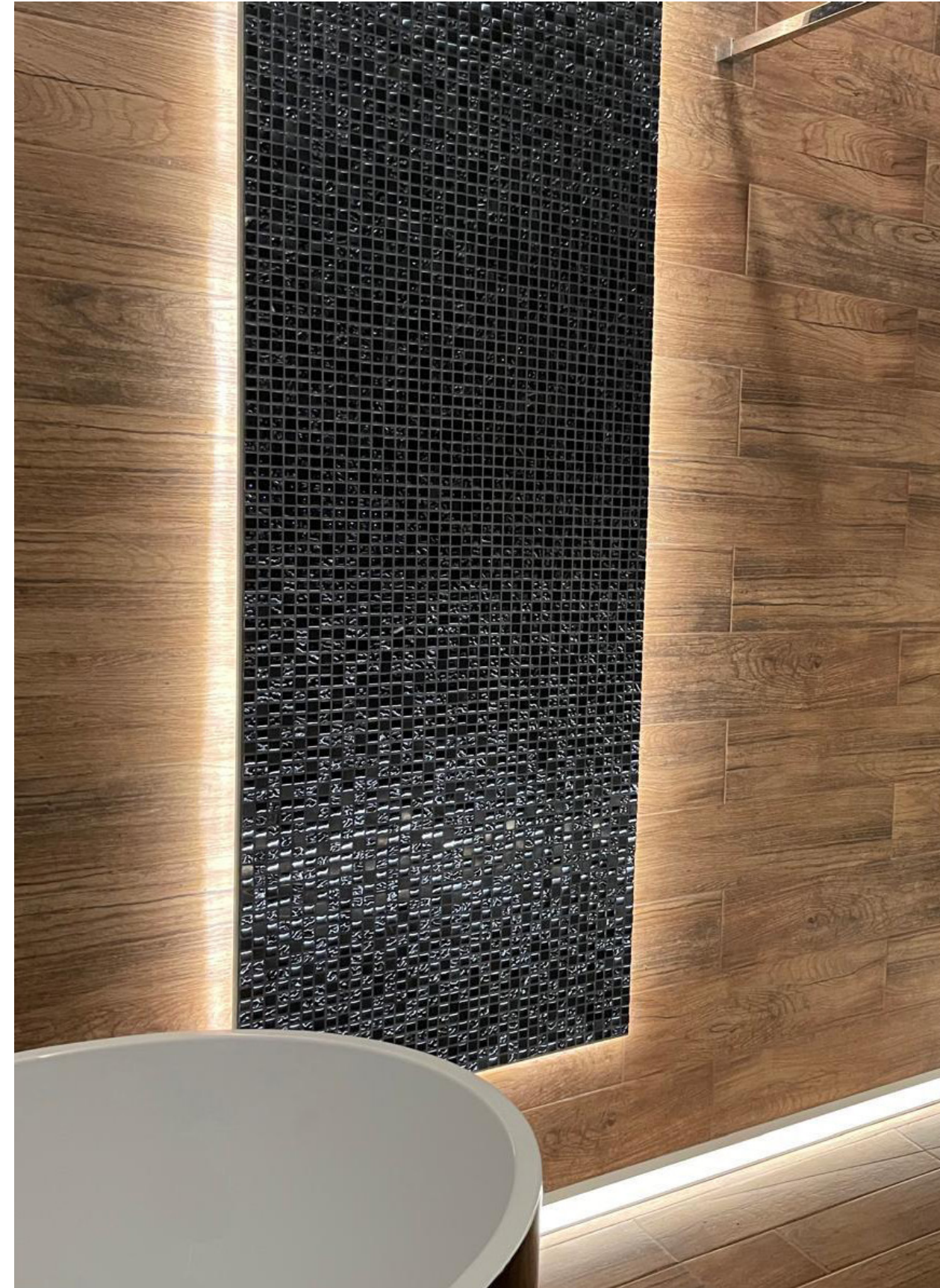
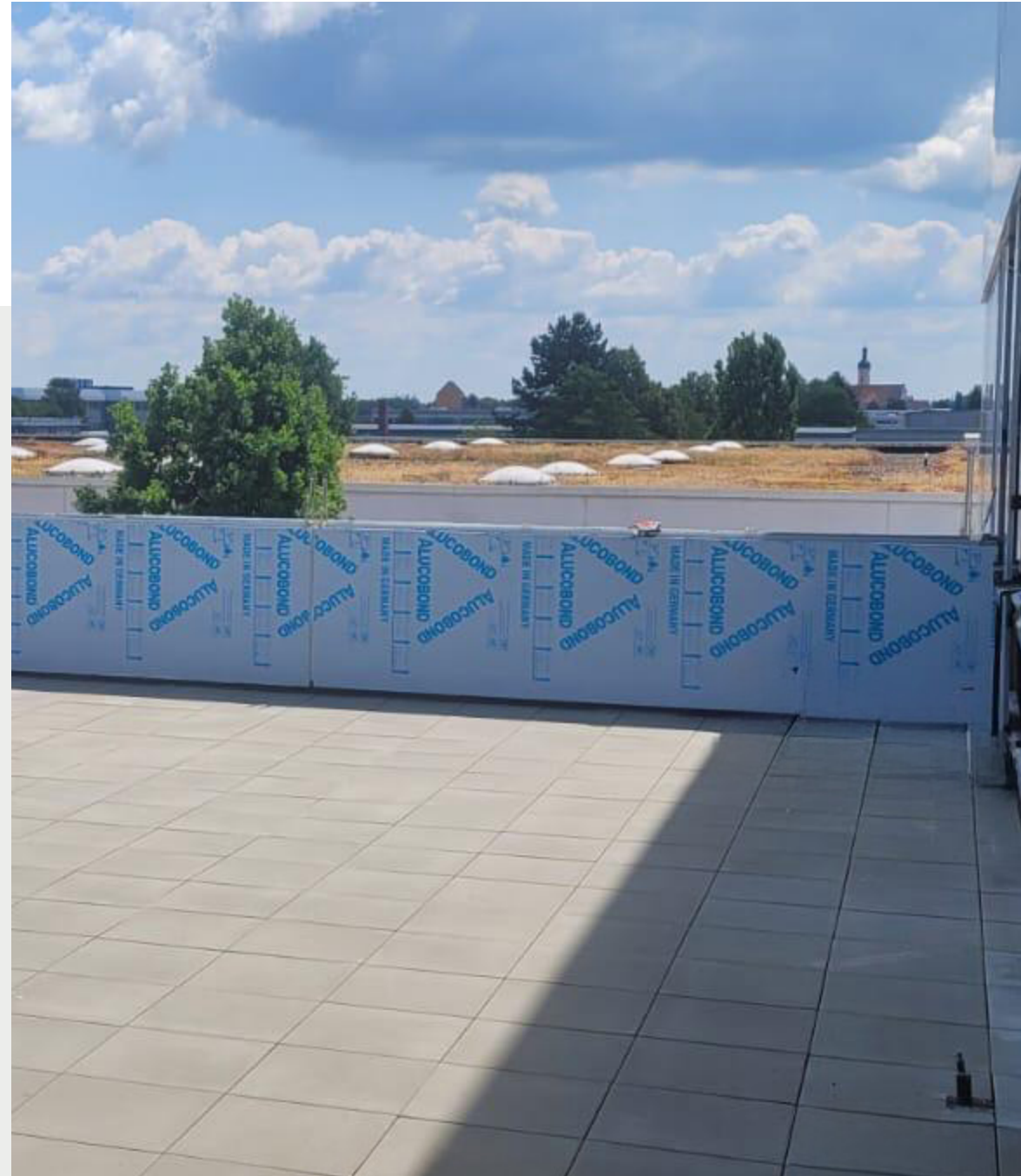
Electricians design and execute safe electrical systems for homes and commercial properties.

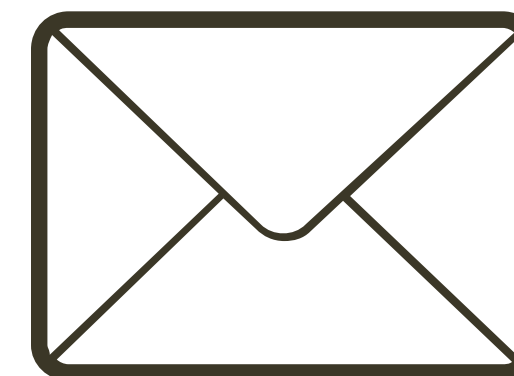
- **Window Installation:**

Our experts provide precise window installation, guaranteeing excellent thermal and acoustic insulation.

- **Plastering:**

Plastering prepares walls and ceilings for the next stages of finishing, such as painting or wallpapering.





FOXEBASU
SP. Z.O.O.



- ✓ Małkowskiego 30/1, 70-304 Szczecin,
Poland
- ✓ Tax Number: 8513209809
Steuernummer: 22/258/16640
- ✓ info@foxesbau.de
- ✓ DE tel: +49 1517 1184536
DE/ENG tel: +49 1515 8367577
PL tel: +48 577 014 500

www.foxesbau.de